



Art in the Vinex: Leidschenveen–Ypenburg

- 🕒 Tour of Leidschenveen 45 min + Tour of Ypenburg 1 hour by bicycle
Start and finish: Leidschenveen-Ypenburg city office, Brigantijnlaan 303

INTRODUCTION

How do you breathe life into a brand new neighborhood? That was the important question raised when in 2002 construction began on a large Vinex district on the east side of The Hague: Leidschenveen-Ypenburg. The municipality and the construction companies were convinced that art could make an important contribution to this. That is why the district houses so many special works of art. Foreign visitors even visit the neighborhood especially for the public art on display!

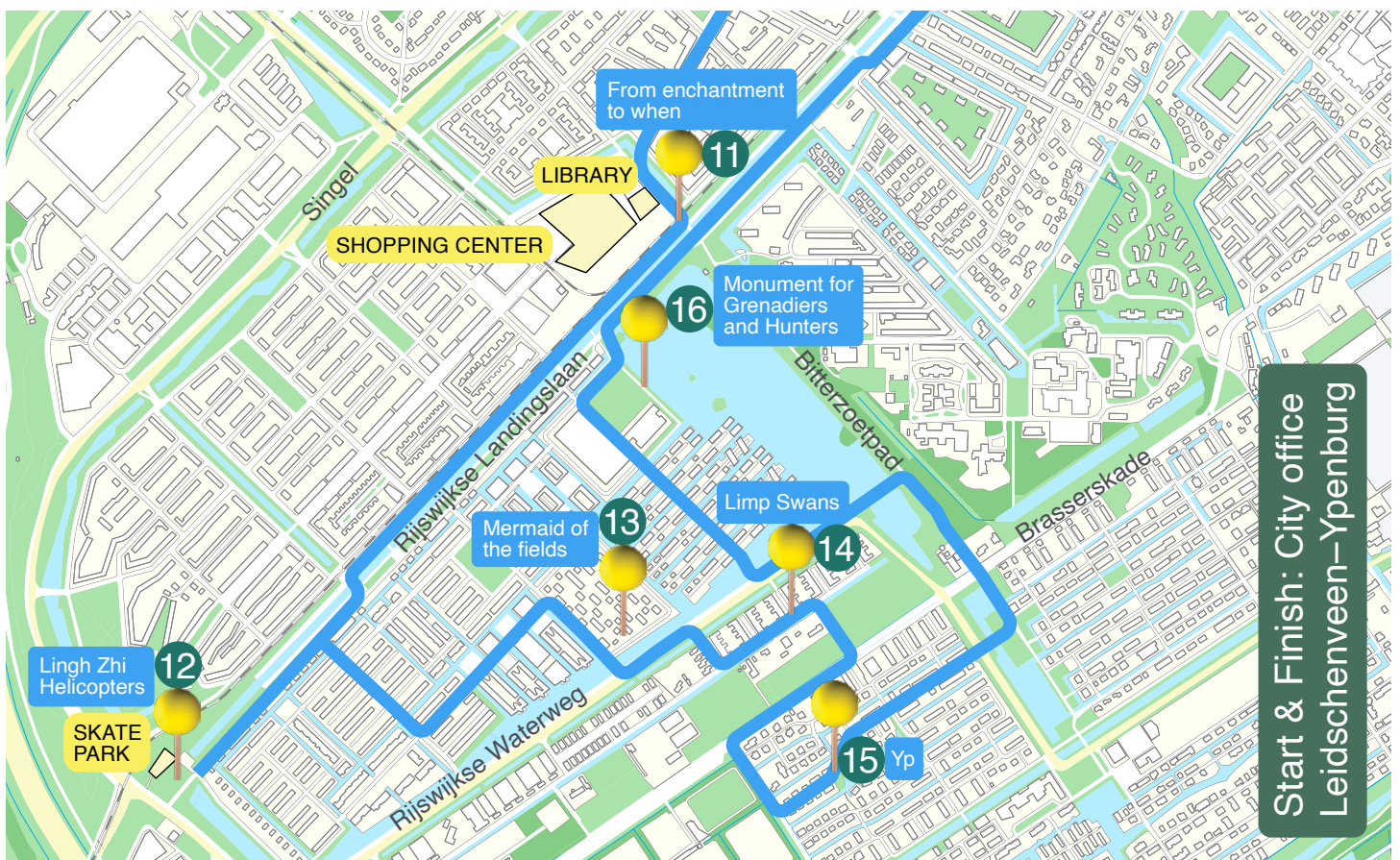
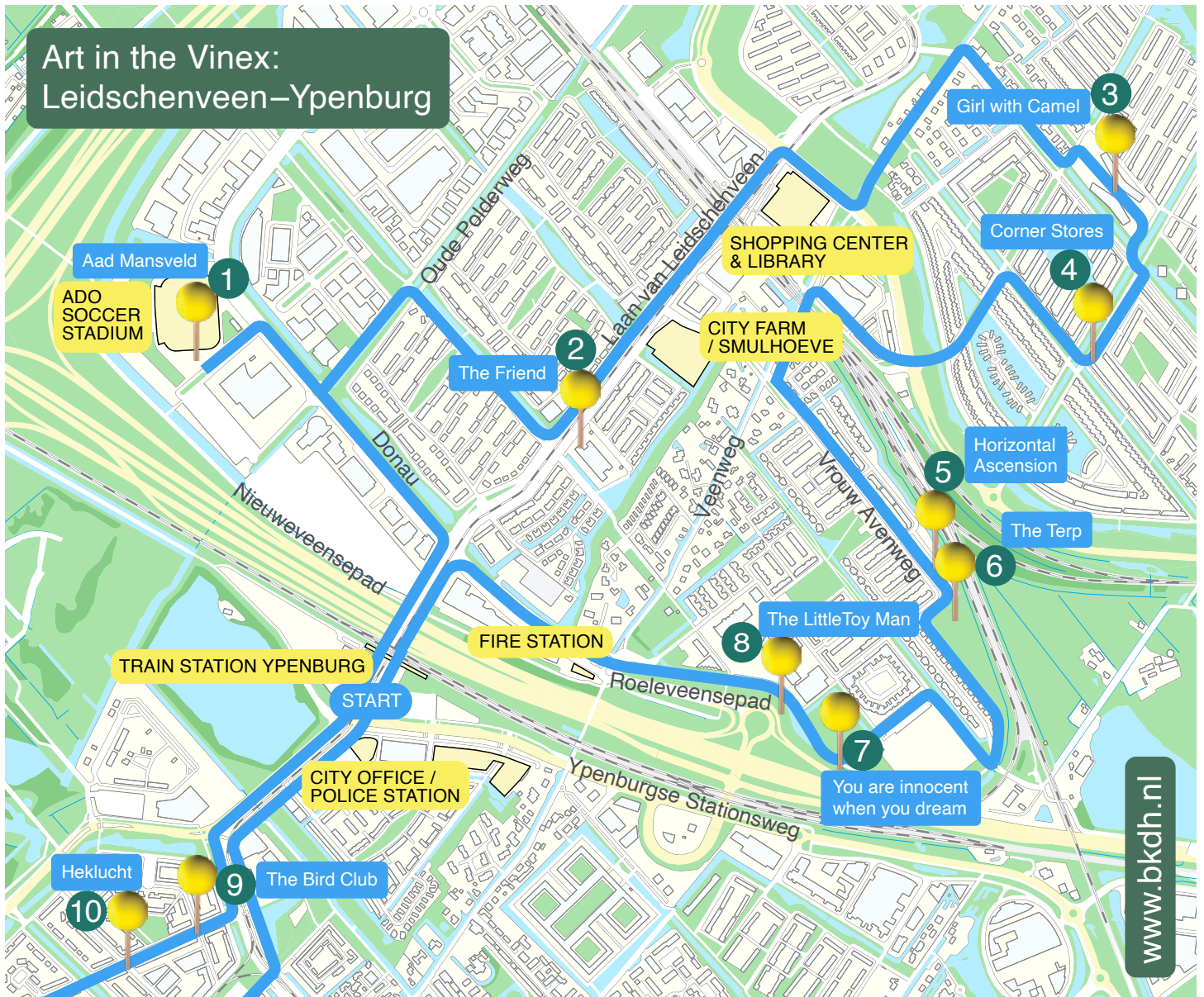
Unique to the Netherlands is the *Art at Home* project in Ypenburg. In 2005 residents of this neighborhood were invited to choose a free work of art to put on their homes. For this project, eight artists created a work of art in (variable) editions. The first works of art landed in the Vogelbuurt (bird neighborhood) of Ypenburg like a swarm of birds. In 2008 a second 'swarm' moved even further into the whole district. Currently more than 200 houses are equipped with a work of art. All of them are visible from the street and they are (and stay!) part of the house.

With *Art in the Vinex* you cycle past exciting both smaller and monumental works of art while getting an impression of the enormous diversity of homes, neighborhoods and atmospheres in Leidschenveen and Ypenburg. Hop on your bike and be surprised by Vinex and art!

HOW DOES IT WORK?

The entire route is marked on the map, the start and finish are highlighted, as are the works of art. You can start at any location and at any time. A short explanation is provided for each artwork. Would you like to know more about a specific work of art? Look at bkdh.nl and search by title, artist or by street name using the map. Interested in more art on the streets of The Hague? Check bkdh.nl.

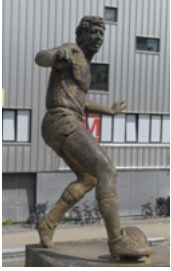
Art in the Vinex: Leidschenveen–Ypenburg



Art in the Vinex: Leidschenveen–Ypenburg

🕒 Tour of Leidschenveen 45 min +
Tour of Ypenburg 1 hour by bicycle

➤ **Tour Leidschenveen:** Pass under the railway and turn left at the intersection towards the ADO stadium.



1. *Aad Mansveld* Loek Bos, 2007

Since the opening of the new ADO football stadium this statue has been standing here: a bronze version of Aad Mansveld. As a tribute from the club to the football player from The Hague who died way too young. Sculptor Loek Bos has portrayed him recognizably and in action. The square on which the statue stands has been renamed the square for the heroes of The Hague. In addition to club icon Aad Mansveld, other deceased football players and fans are also commemorated here.

➤ Drive back a bit, turn left at the roundabout. Follow the Tiber and turn right on the cycle path. On the Aristoteleslaan, turn left until you reach the schoolyard.



2. *The Friend* Atelier van Lieshout, 2007

Art in schools could almost be called a separate subject. How do you make sure that a work of art is special and interesting for both children and adults? Joep van Lieshout created this large, blue friend for the elementary school. Despite its monumental size, this abstract figure has a friendly appearance due to its stream-lined shape and slightly bowed head. Every day he gets big hugs when the children are playing hide and seek.

➤ Continue on Aristoteleslaan, pass under the tramway, and then turn right before the intersection. Pass under the bicycle bridge and then cross it, and cycle straight on. Turn right at Noordkrompsingel. First left. Walk across the school yard.



3. *Girl with Camel* Simona Vergani, 2002

A camel stands in the middle of the square between the elementary schools on Eendenplein. A little girl walks beside it, as if they are on the road together. Even though Leidschenveen is unmistakably located in the wet polder landscape, the sand hills around the schools reminded the Italian sculptor Simona Vergani of the desert. The children don't have a problem with that. During each break they invent their own stories about the bronze camel and the girl.

➤ Leave the schoolyard on the other side, cycle right first and immediately left over the bridge.



4. *Corner Stores* Milou van Ham, 2001

In the past there were shops on the corner of the street in every village and urban neighborhood. People could go to the local bakery, greengrocer or small grocery store. Today, almost everyone buys their groceries in centrally located shopping centers and supermarkets. On various corners of this block of houses, Milou van Ham recalls those old shops with her *Corner Stores*. Using photos, lines of poetry and a shopping list, she turns them into pure poetry.

➤ Turn right at the Alikruiksingel, left at the Spieringdam, straight on at the big intersection, under the railway at the bicycle tunnel. Don't miss it! On the Veenweg turn left at the Vrouw Avenweg. Continue to a small chapel.



5. *Horizontal Ascension* LaSalle, 2012

On the lawn to the left of the hill with the chapel you see a colorful stack. This work of art is part of a series of seven sculptures created for city district De Dijken in Leidschenveen by the artist duo LaSalle. Albert Goederond and Patty Struik – they have been working together since 1994 – have scattered their enigmatic sculptures all over the neighborhood. They built this dazzling *Horizontal Ascension* from cake tins and added many surprising details.



6. *The Terp* Dennis Lohuis en Laurens Kolk, 2009

Like in a dream, a small church rises up on a sturdy hill at the edge of this Vinex neighborhood. The white chapel looks almost unreal in this setting. If you undertake the steep climb to the top, the size of this structure turns out to be quite different from what you might suspect at the bottom of the hill. The little church is so enchanting and surreal that it also attracts visitors from abroad.

➤ Continue on the road and turn left into the Molenpolderstraat. It feels quite surreal to see the chapel in between the houses. At the end turn right. Take the cycle path back into the neighbourhood. Turn left onto Vrouw Avenweg and cycle straight ahead onto the Rietpolderpad between the sporting grounds towards the A12 motorway.



7. *You are innocent when you dream* LaSalle, 2012

It is straight ahead of you: a small pale green figure with what looks like a sheep's head. Yet it is difficult to determine what you are actually looking at. Is it an animal, a fairytale character or maybe an alien? All the questions this wondrous creature raises in your mind will spark your imagination. You will not get a clear answer. Does everyone in your party see the same thing?

➤ Turn right into the cycle path and drive until just before the roundabout at the fire station.

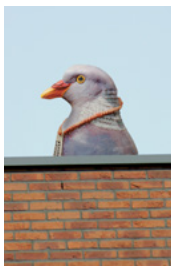


8. *The Little Toy Man* LaSalle, 2012

The artist duo LaSalle is not afraid to create a new work of art using objects and shapes from cultures around the world, past and present. To mark the entrance to the neighborhood De Dijken, they built a green garland, made up of a 12th-century lamp, a fragrance bowl from Cambodia, a gnome figurine, a mask, and a woodpecker. A wonderful combination that will stimulate everyone's imagination.

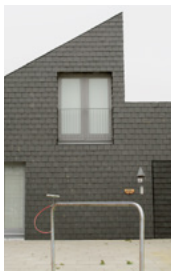
➤ Continue the cycle path, pass under the railway, and go back to the starting point. Continue with the tour in Ypenburg.

➤ **Tour Ypenburg:** Follow the cycle path and turn right into Weidevogellaan.



9. *The Bird Club* Ingrid Mol, 2005-2008

The unique art project *Art at Home* in Ypenburg started in 2005 in the Vogelbuurt. That is why Ingrid Mol came up with *The Bird Club*: a series of 36 different ceramic bird heads. She also made a book about the club, complete with membership numbers and character descriptions. While cycling through Ypenburg you can spot over 90 'birds' on the rooftops and facades. So, keep your eyes open! At number 33 you can spot a blue jay.



10. *Heklucht* Jeroen Bruls en Krijn Christiaansen, 2005-2008

Heklucht by Jeroen Bruls and Krijn Christiaansen is something completely different. To stimulate social interaction in this brand new neighbourhood, the two designers came up with a completely new object with different functions. This steel object is a fence, bicycle rack and bicycle pump all in one. Five copies have been produced for *Art at Home*. Their design was awarded the prestigious Dutch Design Award in 2006.

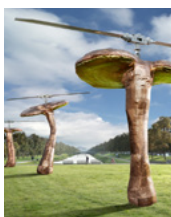
➤ Follow the road, before the shopping center left, turn right on the Rijswijkse Landingslaan.



11. *From enchantment to when* Milou van Ham, 2003

Where the runways of Ypenburg airport once were, there is now a wide zone with a tram track, water with greenery and roads. Milou van Ham has placed 32 retaining walls here over a length of 2.5 kilometres. Since language is the material she works with, she applied various words about time, love, color and detail in the concrete. Cycling along those words, a story automatically arises in your head.

➤ Cross at the Frits Diepenlaan. Follow the road on the other side until you get to a hill with a skate park.



12. *Ling Zhi Helicopters* Huang Yong Ping, 2020

Like they just landed like that. Three giant mushrooms with a helicopter blade on each hat. The French-Chinese artist Huang Yong Ping took the special Ling Zhi mushroom as the starting point for his eye-catcher in Ypenburg. Ling Zhi is a symbol of eternal life in China. These mushrooms have no roots, making them portable. Just as migrants, like the artist himself. In this new residential area, the *Ling Zhi Helicopters* refer to both the past and the present.

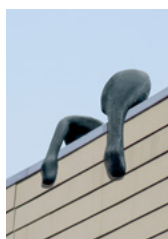
➤ Turn around and cycle back a bit. Turn right at the Van Essendijk, at the end of the street turn right into Van Campenstraat, left before the bridge.



13. *Mermaid in the Fields* Arja van den Berg, 2005-2008

A woman's face stares at you from the corner of the wooden house on the Stiemensvaart. Her head is surrounded by shells. There used to be a beach where the Vinex district of Ypenburg is now located. With this ceramic corner relief, Arja van den Berg wants to recall that past. This *Mermaid of the fields* pops up in a variety of color schemes across the neighborhood.

➤ A little bit back across the bridge. Immediately turn left along the water, go right over the next bridge, via Marinestraat turn left onto Henricuskade.



14. *Limp Swans* Douwe Halbertsma, 2005-2008

At several houses on Henricuskade you can see birds that curiously watch passers-by from the eaves or a shed. It's a comical sight all those concrete friends hanging around so relaxed. No fewer than 54 *Limp Swans* by Douwe Halbertsma can be spotted in Ypenburg. These works of art are also part of *Art at Home*.

➤ First bicycle path on the right, after the water right again, at the Middelweg turn left. Turn left into Berkenbroeklaan. Continue until no 47.



15. *Yp* Tom Claassen, 2005-2008

Unlike the *Blue Tit* on the corner house across the street, this tiny bird is easy to miss. The dark animal is sitting next to the flagpole. Made especially for Ypenburg, this work soon got the nickname 'Yp'. Sculptor Tom Claassen is known for his simple-looking animals and human figures. Monumental in size or small, the sophisticated details and the feeling for material make his sculptures cuddly and endearing.

➤ Follow the road, turn left on the Bitterzoet (cycling) path. Then turn left on Rijswijkse Waterweg, first bridge on the right and drive down the Böttgerwater until a large lawn on the right.



16. *Monument for Grenadiers and Hunters* Dirk Bus, 1951

The oldest work of art in this district is located on the water. Originally made for the Hofweg, this monument moved to the Johan de Wittlaan (near the Catshuis) in 1964. It has been here in Ypenburg since 2010. In fact, it is much more appropriate in this Vinex district. After all, these soldiers fought at Ypenburg airport in May 1940. Sculptor Dirk Bus created a classic tribute to them.

➤ Walk via the bridge to the Rijswijkse Landingslaan. Turn right and cycle back to the starting point.